



# PANTHER NATION

## NRHEG PUBLIC SCHOOLS

School and Community Activities and Information

**PROUDLY EMBRACING THE COMMUNITIES OF:** NEW RICHLAND, HARTLAND, ELLENDALE, AND GENEVA

### Spotlight Program: Adult Enrichment and Recreation



JANUARY – MARCH 2024

**Stay Connected with the NRHEG School District!**

[www.nrheg.k12.mn.us](http://www.nrheg.k12.mn.us)

FACEBOOK

NRHEG Elementary School

NRHEG Secondary School

NRHEG Community Education

NRHEG ECFE



# SPOTLIGHT PROGRAM "Adult Enrichment & Recreation"



Historically, one of the earliest programs offered by Community Education was its Adult Enrichment program. Back in the 1960's, citizens in Flint Michigan realized that one of their community's most valuable assets, its school buildings, were sitting dark and empty in the evenings after school children went home. With a bold vision to maximize their resources, the "lighted schoolhouse" concept of Community Education was born. Local educators and politicians quickly realized the potential, and Minnesota became a national leader in Community Education.

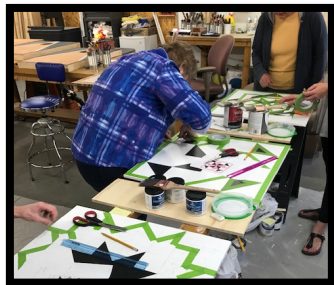
Non-credit programs were developed which would provide opportunities for adults to gain new skills and knowledge while building strong connections and empowering the community. Common categories of classes include: Arts & Crafts, Hobbies & Languages, Food & Nutrition, Music & Dance, Health & Wellness, Computers & Digital Technology, Finances, Fitness, etc.



Classes are typically offered in the evenings with some daytime offerings as well. They often are single session opportunities, although some topics lend themselves to multiple sessions. Weekend events are occasionally scheduled for topics needing a full day of content or that offer a mix of classes all in one day. Offering larger special events for adults or a broader audience of families is common as well. Whether it's partnering with other coordinators to offer a Daddy Daughter Dance, a free pork chop community dinner, a TEDx event, the sky is the limit for creative ways to offer programming that meets community needs.



Unlike traditional educational programs, Adult Enrichment instructors do not need a teaching license nor specific background to be hired. The beauty of this approach is that it makes the program accessible to people who might never have the opportunity to teach. Instructors are sought out for their expertise, years of experience, and desire to teach what they are passionate about. Local people give the gift of their knowledge and expertise to neighbors in their community. Community Education programs are free to hire others in nearby communities, across the state, or even national experts to add to their lineup.



If you have ever thought about teaching a skill to others that you are passionate about please consider teaching a class for NRHEG Community Education! We have a large variety of resources and supplies to help you get started. We are always in need of adult and child enrichment program instructors as a way to broaden and increase the variety of classes we are able to offer to our community. For more information about being an instructor, please call Macy at 507-417-2667!

**DISTRICT CONTACT INFORMATION:** *Our Mission: Empowering students with knowledge and skills to succeed.*  
*Our Vision: To be the school district of choice, inspiring excellence in academics, arts, and activities.*

<p><b>DISTRICT OFFICE:</b>                      Superintendent: Michael Meihak <a href="mailto:mmeihak@nrheg.k12.mn.us">mmeihak@nrheg.k12.mn.us</a>                      Admin. Assistant: Sue Kulseth <a href="mailto:skulseth@nrheg.k12.mn.us">skulseth@nrheg.k12.mn.us</a>                      Phone: 507-465-3206 Fax: 507-465-8633</p>	<p><b>COMMUNITY EDUCATION:</b>                      Director: Macy Whiteside <a href="mailto:mwhiteside@nrheg.k12.mn.us">mwhiteside@nrheg.k12.mn.us</a>                      Phone: 507-417-2667 Fax: 507-465-8633                      Assistant: Stacy Hutchens: <a href="mailto:shutchens@nrheg.k12.mn.us">shutchens@nrheg.k12.mn.us</a></p>
<p><b>ELEMENTARY SCHOOL:</b>                      Elementary Principal: Craig Kopetzki  <a href="mailto:ckopetzki@nrheg.k12.mn.us">ckopetzki@nrheg.k12.mn.us</a>                      Admin. Assistant: Jean Greenwood  <a href="mailto:jgreenwo@nrheg.k12.mn.us">jgreenwo@nrheg.k12.mn.us</a> Phone: 507-684-3181                      Fax: 507-684-2108</p>	<p><b>SECONDARY SCHOOL:</b>                      Secondary Principal: Grant Berg  <a href="mailto:gberg@nrheg@nrheg.k12.mn.us">gberg@nrheg@nrheg.k12.mn.us</a>                      Admin Assistant: Teri Kormann <a href="mailto:tkormann@nrheg.k12.mn.us">tkormann@nrheg.k12.mn.us</a>                      Phone: 507-465-3205 Fax: 507-465-8633</p>
<p><b>ATHLETICS / ACTIVITIES:</b>                      Athletic Director: Dan Stork  <a href="mailto:dstork@nrheg.k12.mn.us">dstork@nrheg.k12.mn.us</a>                      Phone: 507-417-2628 Fax: 507-465-8633</p>	<p><b>TRANSPORTATION:</b>                      Site Manager: Dan Schmidt  <a href="mailto:dschmidt@nrheg.k12.mn.us">dschmidt@nrheg.k12.mn.us</a>                      Phone: 507-417-2644</p>



# Contents

<b>Adult CE Programming.....</b> 5, 6, 8, 13, 15-17	<b>CE Registration Information.....</b> 18-19	<b>District Newsletter.....</b> 3
<b>Early Childhood &amp; Preschool Programs..</b> 5-6, 8-9, 12	<b>Elementary School Information.....</b> 7	<b>General Com Ed Info.....</b> 4
<b>MHSLS Activities/Athletics.....</b> 14	<b>School Age Care.....</b> 9	<b>Secondary School Info.....</b> 14
<b>Special Events.....</b> 6, 8, 13	<b>Student Enrichment.....</b> 10	<b>Youth Recreation.....</b> 10-13

# NRHEG District Newsletter January 2024

## A Letter from the Superintendent

### TO THE START OF A NEW YEAR



As we usher in a new calendar year, I am grateful and optimistic for what lies ahead for our school district.

The start of a new year is a time for reflection, growth, and renewal. As we look back on the accomplishments and challenges of the past year, we can draw inspiration from the resilience and determination that define our school district. Our students, staff, and parents have demonstrated a commitment to excellence, and this collective spirit propels us forward.

As we look at the opportunities that the coming year holds, I would like to share a few key initiatives and priorities that will shape our focus in the months ahead:

1. **Academic Excellence:** We will continue to invest in innovative teaching methods, curriculum enhancements, and professional development opportunities for our educators to ensure that every student receives a well-rounded and enriching educational experience.
2. **Social and Emotional Well-being:** Recognizing the importance of the whole child, we will prioritize initiatives that support our students' social and emotional well-being.
3. **Community Engagement:** Strong partnerships between schools, parents, and the communities are integral to our success. We will actively seek input and collaboration to strengthen these connections in the coming year. Together, we can create an environment where everyone has a stake in the success of our students. Please contact the district office if you are ever interested in serving on a district committee.
4. **Technology Integration:** The rapidly evolving technological landscape presents challenges and opportunities. We will continue to invest in technology infrastructure and explore innovative ways to integrate technology into our classrooms, ensuring our students are well-prepared for the demands of the 21st century.
5. **Safety and Well-being:** The safety of our students and staff is paramount. We will remain vigilant in creating a secure and nurturing environment. This includes ongoing reviews of safety protocols, partnerships with local law enforcement, and initiatives to promote the well-being of all members of our school community.

As we embark on this new year, let us remember that the success of our school district is a shared responsibility. Each community member plays a vital role in shaping the future of our students. Please stay engaged, share your insights, and join us on this journey towards continued excellence.

Thank you for your unwavering support, and I look forward to a year of growth, achievement, and collaboration.

Wishing you a Happy New Year!

Michael Meihak  
Superintendent  
NRHEG Schools ISD#2168





## What is Community Education?

Community Education is an opportunity for local citizens, community schools, agencies and institutions to become active partners in addressing education and community concerns. Community Education embraces these beliefs: education is a lifelong process, everyone in the community shares a responsibility for the mission of educating all members of the community and citizens have a right and responsibility to link the needs of the resources to improve their community.



## Services



### Youth & Adult Programming

Classes provide youth and adults with educational and recreational programs to gain new skills and knowledge while building strong connections and empowering the community

### Early Childhood Services

- Early Childhood Family Education (ECFE)
- Panther Preschool
- Early Childhood Screening

### Facilities Rental

Need gathering space? We have it!



### Facility Scheduling & Requests

Requests for the use of school facilities are made through the Community Education Office. Please contact the office at 507-417-2667 and ask for a facility use form or go to the NRHEG website and find the form under Community Education. A minimum of three week notice for use of facilities is required.

## BECOME AN INSTRUCTOR!!

Share your talents with Community Education.

Community Education classes are flexible and designed to meet the needs of our instructors and the community. Volunteer and salaried positions are available.

For more information call: 507-417-2667 email: [mwhiteside@nrheg.k12.mn.us](mailto:mwhiteside@nrheg.k12.mn.us)

**YOUTH DEVELOPMENT SCHOLARSHIPS:** Through the generous donation from the EF Johnson Foundation, we are able to offer \$50.00 scholarships per child for summer & fall programming – visit our website for guidelines and download the application or get one from your school office or email Macy at [mwhiteside@nrheg.k12.mn.us](mailto:mwhiteside@nrheg.k12.mn.us)! Income eligibility based off of the free/reduced lunch scale.



## BIRTHDAY PARTY GYM RENTAL

Is your child having a large birthday party this year and you don't want to host it at home? Then give us a call about renting our school gym & cafeteria! We help clean up the mess and provide your birthday party crew with basketballs, dodgeballs, footballs, a parachute, hoola-hoops, jump ropes, kick balls, etc. Gym Party Rental fee is \$60 for 2 hours of gym time for free play/games and cafeteria time to eat. Call 507-417-2667 or email [mwhiteside@nrheg.k12.mn.us](mailto:mwhiteside@nrheg.k12.mn.us) to check on gym availability (Ellendale or New Richland) and to schedule your party!



Do you have a young child at home?



### IS YOUR FAMILY INCLUDED ON THE SCHOOL DISTRICT CENSUS?

Has there been a birth in your family? Have you recently moved into your neighborhood? Is there a new family in your neighborhood? ISD 2168 wants all families with young children to know about our programs and activities. Being on the school census also ensures that you will receive information regarding Early Childhood Family Education classes, Early Childhood Screening, and the Panther Preschool program information. In addition, funding for our Early Childhood Programs is based on the number of children on our census.

It is important that everyone be counted! To be added to the census, please call Karla at our school office, 417-2605 or find the form on our Community Education Website at [www.nrheg.k12.mn.us](http://www.nrheg.k12.mn.us) under the community education tab.

Early childhood screening is mandated by the State of Minnesota for all children entering Kindergarten. The best time to have your child screened is between the ages of 3 and 4.



**A navigator connecting pregnant and parenting families with young children (birth-8 years old) with services in their local communities that empower families to be healthy and safe.**

**m** MINNESOTA Help Me Connect is an interagency collaboration between Minnesota's Departments of Education, Health and Human Services. For more information, visit <https://helpmeconnect.web.health.state.mn.us/HelpMeConnect/>



Early Childhood  
**SCREENING**



Are you concerned about your child's development? Help Me Grow is a group of service providers working together to help area families. They provide free early intervention referral services to help families find and coordinate resources for their children aged birth to 5 years old.

- Help Me Grow provides resources for families to understand developmental milestones and learn if there are concerns. This helps families take the lead in seeking additional support or referring their child for a comprehensive, confidential screening or evaluation at no cost.
- Help Me Grow is an interagency initiative of the State of Minnesota Department of Education, Department of Health and Department of Human Services. We partner with all local service agencies.

Early Childhood Screening is FREE and the earlier the BETTER! When your child turns 3, please call 507-417-2667 to schedule a screening appointment.

UPCOMING SCREENING DATES: Friday March 15 & Friday April 19 at the United Methodist Church in Ellendale



## GRANDPARENT'S NIGHT

**Children Ages:** 2 ½ - 7 years w/ adult

A special time for grandma and/or grandpa (or special grandparent-like friend) to spend time with their favorite little person! You will make a project, play a game, read a book, and eat a snack together while making each other feel extra-special, as usual!

\$5.00 per child    Tues., Jan. 30

6:00-7:15pm.

Meet in the preschool classroom (C115). Enter through door #1E

**Register by:** Tuesday, Jan. 23 2024

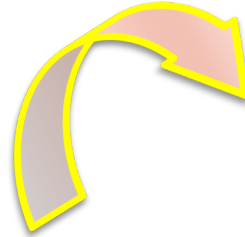
## ECFE (Early Childhood Family Education)

**Adventures In Parenting Class:** This multi-age class focuses on a variety of family issues and activities. Topics covered in parent discussion time are determined through discussion of parent needs/interests, current research, and teacher suggestions including child development, school readiness, temperament, guiding behavior, and sibling relationships. During separation from parents, children interact with the Early Childhood staff and other children and typically have a snack, crafts, stories, music, and more time playing with peers. These classes are for preschoolers aged 2 ½ -5 years old and their parents, grandparents, or caregivers.

**WINTER/SPRING 2024 Session** Classes will be held Tuesday evenings in the New Richland or Ellendale Preschool classroom. 5:45-7:15pm. \$15 per family. Class locations may rotate between Ellendale and New Richland depending on participants' preferences – March 4<sup>th</sup> class will be located in New Richland room #C115 (enter south east playground doors #2S). Dates are subject to change. Classes are: March 5, 12, 19. April 2, 9, 16, 23

# NRHEG Panther

## PRENSCHOOL



NRHEG Community Education and our School Readiness Programs take pride in investing in our youngest learners and in preparing children and families for success in school.

Registration Forms will be accepted starting Monday, March 11th.

NRHEG Panther Preschool provides programming designed to help early childhood learners prepare for Kindergarten. Our program is designed for all families. Three year old students are in the New Richland Secondary School or the Ellendale Elementary School and have options of 2 or 3 day-a-week programming in the morning. Four year old students are located in the New Richland Secondary School or the Ellendale Elementary School and have options of 2, 3, or 4 day-a-week programming in the morning or afternoon.

### Why do parents choose our program?

**Our Students:** Children who attend our preschool program enter Kindergarten with foundational skills (social-emotional & academic) and experiences that will help them to be successful in school.

**Our Teachers:** State licensed & highly qualified in early childhood education, our teachers are dedicated and passionate about our earliest learners.

**Our Curriculum & Assessments:** Our 123-Learn curriculum is Parent-Aware Approved, research based, developmentally appropriate, and aligned with the MN state learning standards. We utilize TS Gold Assessment (Parent Aware approved) throughout the year along with our KRAT (Kindergarten Readiness Assessment Tool).

**Our families:** Families are valued partners with the school in supporting their child's learning at home.

**Focus on the Transition into school:** Our programs are integrated and aligned with Bridges/Kindergarten to make that transition into school smooth and exciting for our youngest of learners.



## PANTHER PRESCHOOL REGISTRATION & OPEN HOUSE



Registration & Open House for the 2024-25 school year will be on Monday, March 18 6:00-7:00pm in New Richland (enter door #2S) or Wednesday March 20 4:15-5:15pm in Ellendale (enter door #1N). You can attend either site and register for either site on these days.

Swing in during this time to register and check out the classroom, meet the teachers, do a craft, get a free book/activity, and have fun playing with new friends! The registration fee will only be \$20 if you attend one of the Open Houses or register before Friday, March 22<sup>nd</sup>. The registration fee after Friday March 22 is \$35 per child.

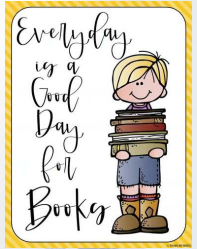
Registration information will be available for the 2024-25 preschool program on our website starting Monday, March 11. Please check our website: [www.nrheg.k12.mn.us](http://www.nrheg.k12.mn.us). Go to the Community Education tab, click on Early Learning, then Registration Forms.



# Ellendale Elementary School Information

## REMINDERS OF UPCOMING DATES & EVENTS:

Parents – Please take time to read to or with your student each day.



### JANUARY

- 1 - New Year's Day & last day of Winter Break.
- 2 - School resumes
- 15 - MLK Jr. Day, no school Staff Development Day
- 22 - no school, teacher planning day
- 30 - Parent/Teacher conferences (4:00-8:00pm)

### FEBRUARY

- 1 - Parent/Teacher conferences (4:00-8:00pm)
- 19 - no school, President's Day

### MARCH

- 4 - no school, Staff Development Day
- 26 - Bridges/Kindergarten Registration
- 28 - no school, teacher planning day
- 29 - no school, Spring Break

NRHEG  
ELEMENTARY  
SCHOOL



600 School St, Ellendale, MN 56026

March 26th 2024  
3:30-5:30

## NRHEG Elementary

## BRIDGES & KINDERGARTEN REGISTRATION

PLEASE JOIN US AS WE WELCOME ALL INCOMING KINDERGARTENERS FOR THE 2024-2025 SCHOOL YEAR.

### Please bring with you:

Immunization Record

Official Birth Certificate

Registration Forms

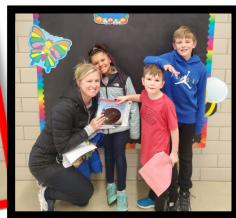
### WHAT HAPPENS AT REGISTRATION?

During this time you will visit the elementary school, tour classrooms, ask questions and meet the Bridges and Kindergarten Teachers. When you are all done stop by the Community Education table to receive your free book & craft for attending!

If you have questions please call

**507-684-3181**

Please Enter Using Main Door (3E)



Books made available through the Southern Minnesota Initiative Foundation Early Literacy Grant



## Follow My Lead Family Dance Class.

Do you have two left feet and want some practice so you can move and groove with the rest of the crowd on a dance floor? Come and learn a few popular dances and some easy dance moves before your big night of family dancing on Feb. 9! You will learn the dance moves to the Electric Slide, Cupid Shuffle, Chicken Dance, Cha-Cha Slide as well as some easy slow dance and swing dance moves you can use over and over again!

**Location:** New Richland Middle School Gym (enter through door #6)

**Date:** Tuesday Feb. 6<sup>th</sup>      **Registration Deadline:** Thursday Jan. 25<sup>th</sup>

**Time:** 6:00-7:30pm

**Instructor:** Laura Garlow (our youth dance instructor in Ellendale).

**Cost per class:** \$10 per family



# Valentine's Day Family Dance

New Richland Secondary School

Commons.

Friday, February 9<sup>th</sup> 6:15-7:45pm.

Recommended for families & children ages 2-11 years old

**Games - Snacks - Crafts  
Dress Up & Dance the night away!**

To register - fill out the registration form  
located at the back of the book (register by

Thursday Feb. 1)

Entrance is \$10.00 per family.

Enter through door #E





# School Age Care



AGES: 3 YEARS - 5TH GRADE



## School Year 2024-25

Hours: 6:45am- to 5:45pm Monday-Friday

New Richland & Ellendale Schools

\*All day care available for children ages 3-5 years old in New Richland (enrolled in Panther Preschool)

\* Before / After School care for B/K – 5<sup>th</sup> grade in Ellendale and New Richland Schools

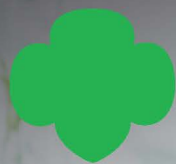
\*Non-School day care located in New Richland (preschool-5<sup>th</sup> grade)

- \*Preschool aged Before & After-School all-day Care
- \*B/K-5<sup>th</sup> grade Before & After-School Care.
- \*Kindergarten Readiness Support
- \*Homework help upon request

- \*Fun-Recreational Activities
- \*Breakfast, most Lunches & Snacks Included
- \*Care on Non-School & Summer Days
- \*Arts & Crafts

Cost varies based on your hours needed per week  
visit our website at:  
[www.nrheg.k12.mn.us/Page/3214](http://www.nrheg.k12.mn.us/Page/3214)

Please call or email Rachel at [rpowell@nrheg.k12.mn.us](mailto:rpowell@nrheg.k12.mn.us) 507-416-2137 or 507-417-2626 for more information



# Girl Scouts.

[gsrv.gs/join](http://gsrv.gs/join)



FIND YOUR

# Friends



girl scouts  
river valleys

PAID ADVERTISEMENT



# Snow Tubing at Mount Kato

(Grades 2-6)

If you like to sled, you will love snow tubing!! Imagine the thrill of riding down a snowy hill and then effortlessly riding your tube back up. The fee includes the use of snow tube, tube runs, tube lift, and bus ride. Riders must be at least 42" tall to snow tube. Helmet rental is an extra \$4.00. If you want a helmet, please note this on the registration form.

**Date:** Monday, March 4<sup>th</sup> (non-school day) **Cost:** \$25.00  
 school. 10:05am bus will pick up in New Richland.

**Time:** 9:45am bus will pick up in Ellendale at the  
**Height requirements:** at least 42" tall

**Details:** We will eat lunch first from 11:00-11:30 then snow tube from 11:30-1:30pm. We will return at approximately 2:45pm in New Richland and 3:05pm in Ellendale. Please write down on your registration form if your child will be picked up & dropped off in Ellendale or New Richland and who will be dropping off and picking up (or if they are to walk home).

**Food:** Please send \$\$ if your child would like to purchase food. We will eat from 11:00-11:30 before tubing. Meal tickets are available for an additional \$9.75 for a hot dog or hamburger, fries, and a pop. Please include \$9.75 with the fee if purchasing a meal ticket (indicate 'meal ticket and either a hot dog or hamburger' on the registration form).

**\*\* You must have a signed parent permission slip completed when you register.** You may obtain the permission slips from either school office or off our website at <https://www.nrheg.k12.mn.us/site/default.aspx?PageID=2063>. Please bring appropriate clothing: warm coat, snow pants, snow boots, hat, an extra pair of socks, and mittens or gloves. We also need a few adult chaperones. Adult chaperones will receive one free child admission plus themselves for this trip. Please call the Community Ed Office if you are interested at 417-2667 or indicate it on your child's registration form.

**We need exactly 50 kids to register for this trip to run as it is a private rental. So register early to ensure your spot!! 50 minimum & 50 maximum attendance.**

## After-School Art Club for students in 2-6<sup>th</sup> grade.

All classes will begin & end in the Community Education room at the Secondary Building, room #C113.

### Session 1: Learn to Paint on Canvas

Cost: \$20 Date: January 10 Time: 3:30-5:30pm Register by: Wednesday Jan 3

Our very own Judy Tweeten will walk you through her step-by-step process so you too can learn how to create this wonderful picture to your right on a large canvas!

### Session 2: Valentine's Day Mason Jar Gift

Cost: \$5 Date: Tuesday Feb. 6<sup>th</sup> Time: 3:30-5:30pm Register by: Wed. Jan. 31

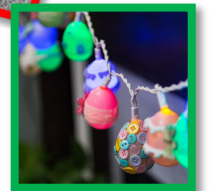
Lets make a fancy Valentine's Mason Jar and fill it with candy for that special person in your life for Valentine's Day! There will be many different designs and colors you can choose from!

### Session 3: Easter Tree or Easter Egg Lights

Cost: \$10 Date: Wed, March 13 Time: 3:30-5:30pm Register by: Friday March 1

Have a relaxing good time with us while you decorate plastic Easter eggs for your tree or your lights! Make sure to indicate whether you want to create the tree or the lights on your registration form! Hot glue will be used.

**Register for all 3 sessions for \$30.00!**



Calling all LEGO® Masters! We can't wait to see all your magnificent creations at LEGO® Club

What is LEGO® Club? Our LEGO® Club is all about sharing your ideas and creating new and fantastical creatures, vehicles, and structures. There will be time for imaginative creations along with individual and group challenges and contests to put your STEAM skills to the test!

**Winter/Spring Session Dates:**

**Grades 1-2:** Fridays - Jan. 26, Feb. 16, March 22, April 19

**Grades 3-5:** Fridays - Feb. 2, March 1, April 5, May 3

**Time:** 3:15-4:30pm.

**Cost:** \$5.00 per person for all 4 sessions

**Location:** Ellendale Media Center.

**Register by:** Fri. Jan. 19

**AFTER-SCHOOL  
LEGO® CLUB**



# NRHSG

## COMPETITION CHEERLEADING

### CHEER TEAMS

Middle School (Gr. 5-8) & Varsity (Gr. 9-12)

### PROGRAM DATES

July 2024-February 2025

### REGISTRATION

Informational Meeting / Registration:

Tuesday, April 9<sup>th</sup>, 2024

7:00pm.

New Richland High School Commons (enter east door #1E)

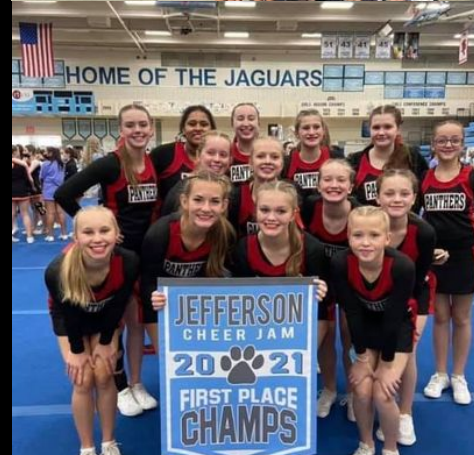
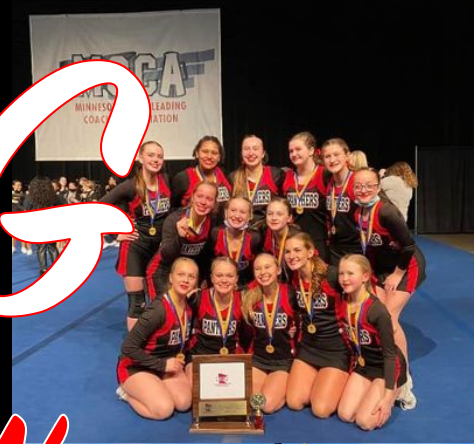
### COST

Due to the nature of this program and pricing being dependent upon uniform needs, 2024-2025 competition fees, choreography, etc. pricing will be better estimated later in the spring. Please email [panthercheercoaches@gmail.com](mailto:panthercheercoaches@gmail.com) for more information.

*This program is a large commitment and requires those that are competing to be at all practices and competitions as your team counts on you! Middle School cheerleaders practice approximately once per week, Varsity approximately twice.*

*Competition teams will compete in approximately 5 competitions throughout the season. If you are interested in more information please contact [panthercheercoaches@gmail.com](mailto:panthercheercoaches@gmail.com) and attend the registration meeting on Tuesday, April 9)*

**Registrations are accepted until April 24<sup>th</sup>**





# Youth Dance Program



The philosophy of our dance program is to teach the fundamentals of dance in

a safe and fun manner and to instill in our students an appreciation of the arts in an enjoyable

atmosphere. Our main goal is to teach the love of dance as a performing art. Our goal is to give each student the best possible dance experience, to help them gain poise and confidence, as well as encouraging participation in a healthy physical activity. Each season-ending recital is designed to teach our students what it would be like to be a real performer. They learn teamwork and stage directions, experience dressing in costume, as well as seeing the workings of a theatre. Performance costumes will be an additional cost. Email Macy to set up a payment plan if needed at [mwhiteside@nrheg.k12.mn.us](mailto:mwhiteside@nrheg.k12.mn.us)

Classes are held on usually held on Mondays: Jan 29, Feb 5, 12, 20(Tues), 26, March 5(Tues), 11, 18, 25, April 2(Tues), 8, 15.  
All classes will rehearse in Ellendale on Friday, April 19 – times TBD. Recital is Saturday, April 20 at 10:00am in Ellendale.

\$50 youth scholarships available!  
See page 4

## Ellendale Elementary Cafeteria

### **B/K & 2<sup>nd</sup> Grade: 3:30-4:00pm. Price: \$108**

This combo class will be full of cute jazzy dancing and sweet ballet dancing. We will explore the fundamentals of ballet and jazz dance along with moving creatively to the music. Students will be moving and grooving to upbeat music in jazz and then in ballet we will focus on graceful and precise movements as we tell a story through ballet dance. This class will be full of grooves and tunes!

### **3-5<sup>th</sup> Grade: 4:00-4:40pm. Price: \$143**

This class will be full of spunky jazz moves and graceful ballet fluttering. We will explore the fundamentals of both ballet dance and jazz dance. Be ready for lots of fun movement and great music all while learning the technique of dance.

### **1<sup>st</sup> Grade: 4:45-5:15pm. Price: \$108**

We will explore the fundamentals of ballet and jazz dance along with moving creatively to the music. Students will be moving and grooving to upbeat music in jazz and then in ballet we will focus on graceful and precise movements as we tell a story through ballet dance. This class will be full of grooves and tunes!

### **Tiny Dancers (prek): 5:15-5:45pm. Price: \$108**

Preschool age students will explore movement creatively through learning the fundamentals of ballet and jazz dance along with dancing along to fun music. In class students will also work to strengthen fine and gross motor skills needed in the early years! This class will be full of smiles, twirls and tunes!!

### **Parent & Me (12mo to 3 yrs): 5:45-6:15pm. Price: \$35**

This class meets on (Jan. 29, Feb 12, March 18, April 15) and is for your little one and you to move and groove together! We will dance to fun music, learn fun finger plays and work on our fine and gross motor skills together. This class will be full of giggles and wiggles! (Parents will participate the whole time. Socks or bare feet are needed for this class)



My name is Laura Garlow. I am excited to get to share my passion for music and dance with the Panther community! I have been dancing since I was 6 years old-dancing for 12 years through school and did 2 years of competitive dance! I loved music - also participating in choir, plays and musicals. I can't wait to get to move and groove with our Panther students!

## New Richland City Hall

### **Tiny Dancers(prek-K): 4:15-4:45pm. Price: \$108**

Preschool and kindergarten age students will explore movement creatively through learning the fundamentals of ballet and jazz dance along with dancing along to fun music. In class students will also work to strengthen fine and gross motor skills needed in the early years! This class will be full of smiles, twirls and tunes!!

### **1-4<sup>th</sup> Grade: 4:50-5:30pm. Price: \$143**

This combo class will be full of cute jazzy dancing and sweet ballet dancing. We will explore the fundamentals of ballet and jazz dance along with moving creatively to the music. Students will be moving and grooving to upbeat music in jazz and then in ballet we will focus on graceful and precise movements as we tell a story through ballet dance. This class will be full of grooves and tunes!

### **Parent & Me (12mo to 3 yrs): 5:30-6:00pm. Price: \$35**

This class meets on (Jan 29, Feb 5, March 11, April 8) and is for your little one and you to move and groove together! We will dance to fun music, learn fun finger plays and work on our fine and gross motor skills together. This class will be full of giggles and wiggles! (Parents will participate the whole time. Socks or bare feet are needed for this class)

### **5<sup>th</sup> grade & up: 6:00-7:00pm. Price: \$143**

In this class we will learn the basics of jazz and lyrical dance. We will learn technique and work on flexibility as dancers. We will dance to upbeat music, as we learn to kick, leap and turn! . We will also be learning how to tell a story through soft and flowing moves in the new popular dance style of lyrical dance. This class will be full of glamorous, precise and flowing new moves.



My name is Devin Redman and I am so excited to be sharing my love for dance with students in the NRHEG community! I started taking dance lessons at age five and continued through high school. Through the years I studied ballet, jazz, lyrical, contemporary, Dance line, pointe and tap dancing. After high school, I danced with the Minnesota Dance Collaborative adult performing group for three seasons. I have taught dance for eight years to students ranging from eighteen months through high school. I have a passion for the movement, storytelling and structure of the art of dance. I also really enjoy sharing my passion with students! I look forward to creating, teaching and dancing with the students in the NRHEG community!

As of all our Community Education Programs, Youth Dance is forever evolving to fit the needs of our dancers & communities! If you have suggestions please let us know! Minimum class size is 6 participants. Some classes may need to be combined to meet the minimum class size – registered participants will be contacted regarding that decision if necessary.

The goal is to constantly improve as dancers, as individuals, and as a team. Above all, we must always give it our best effort.

The effort matters as much, if not more, than the results.





## NRHEG CLAY TARGET TEAM

**Grades:** 6-12. Available in both fall and spring, this league is for students who have a valid gun safety certificate and have an interest in shooting sports. This is the fastest growing high school sport in MN! The State Class Championship represents the largest youth trap shoot in the nation and the MSHSL State Tournament is currently the only one of its kind in the nation.

**Fall League:** begins in mid-September and goes for 6 weeks with no state shoot at the end. It's a great way for students to introduce themselves to the sport before the Spring League. Registration for the Fall League begins in August so being on the mailing list before school starts is very important. Shoots are held at the Owatonna Gun Club. Registration covers 2 rounds of targets per week for the 6-week season, the cost of league registration, a meal at our fun shoot, and a team shirt.

**Spring League:** involves weekly shoots one night per week starting the first week of April and going through the MSHSL State Tournament in late June. Shoots are held at the Owatonna Gun Club. Registration covers 2 rounds of targets per week for the 10-week season, the cost of league registration, state shoot registration, a meal at our fun shoot, and a team shirt.

**All students provide their own firearms, ammunition, and safety gear. Students from neighboring school districts without a team or who are home schooled are also welcome to join us!**

For more information contact Dan Sorum at 507-417-2627 or email him at [dsorum@nrheg.k12.mn.us](mailto:dsorum@nrheg.k12.mn.us). If you wish to be placed on the team mailing list email Mr. Sorum your contact information ahead of time.

ALL FEES need to be sent to Mr. Sorum (306 Ash Ave. South, New Richland, MN 56072) with checks made out to NRHEG Community Education with Clay Target in the memo. Registration is set in January so getting on the mailing list is important for up to date information.

# CITY OF NEW RICHLAND



**NEW RICHLAND AMBULANCE**  
COMMUNITY EDUCATION & TRAINING

OFFERS THE FOLLOWING COURSE:



**American Heart Association**

**CPR & First Aid**

\$75  
Per Person

JAN. & FEB. SESSIONS	MARCH SESSIONS
Sunday Jan. 14th 1-4pm	Wednesday 6th 6pm-10pm
Sunday Feb. 11th 1-4pm	Saturday 9th 8am-12pm
Class held at the City Hall	Class held at the City Hall

REGISTER ONLINE!

➔

[www.cityofnewrichlandmn.com](http://www.cityofnewrichlandmn.com)

Click on "CPR Training Registration"



**CPR TRAINING**

Get certified. Save a life. You'll be glad you did.

## City Ice Rink

Stay active outdoors while enjoying a fun time with family and friends, at the New Richland outdoor skating rink.



Located at 115 NW 5<sup>th</sup> St. Travel North on Broadway to 5<sup>th</sup> St. Warming house and hockey nets are also available for use.

The City Ice Rink is open as the season allows. Like and Follow the 'City of New Richland, MN' for the opening date and other important and up-to-date information.

# HAM BINGO

## Saturday, March 16<sup>th</sup>

at New Richland City Hall Community Room

7:00 pm (doors open for seating at 6:30pm).

\$15 per card for the night gives you 15 games PLUS a final blackout game

Each game wins an Easter Ham.

**THANK YOU FOR YOUR COMMUNITY SUPPORT!**

# SECONDARY SCHOOL INFORMATION

## REMINDERS OF UPCOMING DATES & EVENTS

### JANUARY

- 1 - last day of winter break
- 2 - School resumes
- 15 - MLK Day - no school, Staff Development Day
- 19 - end of 2<sup>nd</sup> Quarter
- 22 - no school, Teacher Planning Day

### FEBRUARY

- 19 - no school, President's Day
- 26 - Secondary Parent/Teacher Conferences (4:00-8:00pm)

### MARCH

- 4 - no school, Staff Development Day
- 27 - end of 3<sup>rd</sup> Quarter
- 28 - no school, Teacher Planning Day
- 29 - no school, Spring Break



## SPRING SPORTS



Information for 7-12<sup>TH</sup> Grade Students

**GIRLS SOFTBALL**

**BOYS BASEBALL**

**BOYS & GIRLS TRACK AND FIELD**

**BOYS & GIRLS GOLF**

Registration information will be sent to all families with students in grades 7-12 in late February. There will also be a spring sports meeting in early March. Watch for more details and this email soon!

More information can be found at:  
<https://www.nrheg.k12.mn.us/domain/732>







# MN HIGHWAY SAFETY CENTER

## 55+ Driving Classes

*This class will save you at least 10% on your auto insurance.*

MN Statute requires the completion of an 8 hour initial course. To maintain your discount, a 4 hour refresher course needs to be completed every 3 years. Upon completion, submit your certificate to your insurance company.

### DEFENSIVE DRIVING REFRESHER COURSE (4 hour class) \$24 per person

March 18, 2024 = 5:30-9:30pm in the New Richland Secondary School Library (enter through door #1E)

### FIRST TIME DEFENSIVE DRIVER COURSE (8 hour class) \$28 per person.

March 11, 2024 = 5:30-9:30pm in the New Richland Secondary School Library (enter through door #1E)

March 12, 2024 = 5:30-9:30pm in the New Richland Secondary School Library (enter through door #1E)

**TO REGISTER: visit their website at [www.mnsafetycenter.org](http://www.mnsafetycenter.org) or call 1-888-234-1294.**

This 55+ Driver Discount Program (DDP) is approved by the Minnesota Department of Public Safety.

*These driver improvement courses are taught by MN Hwy Safety Center trained instructors. These classes explore changes in laws, the latest vehicle technology, and provide you with easy-to-use defensive driving tips. In addition, we will explore traffic safety and accident prevention. The classroom sessions are the initial eight hour and four hour refresher format. First time participants must complete this 8 hour course (two four-hour sessions) before you are able to take the 4 Hour Renewal Course. Completion of this 8 hour course allows for a 10% reduction on automobile insurance premiums for those aged 55 and over. After completing the 8-hour course, you must take the 4-hour refresher every three years to take advantage of the discount.*



## Folk Art Chicken

Do you want to get out of the house and join a fantastic group of people AND learn a new skill? Sign up and bring some friend (or make a date of it with your significant other) for Judy Tweeten's Folk-Style Acrylic painting class and learn how to reproduce strokes, swirls, and embellishments that are associated with certain nationalities including Bauernmalerei and Rosemaling.

You can work at your own pace/schedule and pick 2 or 3 of these dates to finish your acrylic painting on a 11x14" canvas.

Various size canvas may be available upon request. Please contact prior to deadline to see if your desired size is available.

**Dates:** Wednesday Feb 7<sup>th</sup> 6:00-8:00pm.

Saturday Feb. 10<sup>th</sup> 9:30-11:30am.

Wednesday Feb. 14<sup>th</sup> 6:00-8:00pm

**Price:** \$50 per person. Includes all the supplies you will need – just bring an apron if you want!

**Register By:** Thursday, Jan. 25<sup>th</sup>

**Location:** New Richland High School Art Classroom (#D153) sign will be posted. Enter through door #1E (main school entrance)

NRHEG COMMUNITY EDUCATION

# PICKLEBALL 101

Wednesdays 6-9:00pm

January 17 – March 20

New Richland Secondary School, enter door #6W

Come and experience the fastest-growing sport in the country. If you have played tennis, squash, badminton, or table tennis you are sure to enjoy this exciting new game.

Beginner to Advanced Pickleball players are welcome to register for a 4 week and/or 5 week class. *Don't know how to play the game? No problem! Our instructor, Loren Skelton, will teach you how!* Come give it a try and beat those winter blues! Learn the strikes, rules, and scoring of this popular game! Bring your own paddles or use ours! Dress comfortably and wear tennis shoes.

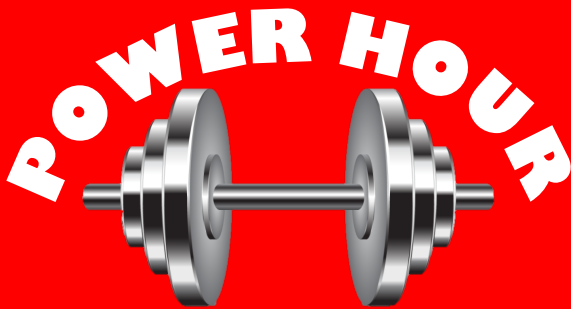
**Session 1: January 17 - February 7 (4 weeks). \$40 per person**

(Registration deadline: Thursday, January 11)

**Session 2: February 21-March 20 (5 weeks). \$45 per person**

(Registration deadline: Thursday, Feb. 15)

Minimum 12 participants to run the class, maximum of 20 participants – so register early!



# TOTAL BODY FITNESS

**MONDAYS - WEDNESDAYS - FRIDAYS** 5:00AM TO 6:00AM

LOCATION: NR Secondary School weight room, enter through door #17

**ALL FITNESS LEVELS ARE WELCOME!** Join Emily for a unique & customized group workout experience! She understands that every person is unique and every goal is personal, so by working together we can build healthy, happy people! Our unique personalized workout classes offer a wide variety of movements, routines, and challenges based on the strengths of the coach, the equipment available to us and the spaces we are provided. This is a truly customized group fitness class that offers multiple workout options 3 days a week so eventually you will discover multiple options/pathways within each of our workouts to help you achieve your goals!

**Session 4**

Dates: Jan. 3- March 1

\$85 per person / 9-weeks

**Session 5**

Dates: March 4 – April 26

\$75 per person / 8-weeks



# Homebuyer Education



Use the QR Code to register!



## So, you're thinking about buying a house.

Did you know there are plenty of financial benefits to homeownership including tax benefits, building equity, appreciation of your investment and a stable monthly payment? But those financial benefits also come with financial responsibilities.

Purchasing a home at a price you can afford is key to successful homeownership – that is, maintaining homeownership. But how do you know if you can afford to buy and maintain a home, and how much home you can afford?

The process can be daunting, but our homebuyer education program will help you better understand the process so you can feel confident in your readiness to buy a home. One time classes are offered one Wednesday per month. Please select just one date when registering.

**New Richland Media Center**  
Enter through door #1E

**Dates:** Feb. 7 (register by Feb 2)  
or April 10 (register by April 5)

**Time:** 6:30-7:15pm

**Ellendale Media Center**  
Enter through door #1N

**Dates:** March 6 (register by March 1)  
or May 1 (register by April 26)

**Time:** 7:30-7:15pm

# OPEN GYM

Sundays

## SCHEDULE

E.O. Sun. Jan – April. 2-4pm

### New Richland

Jan. 14      Feb. 11  
March 10    April 7

### Ellendale

Jan. 28      Feb. 25  
March 24

## EQUIPMENT AVAILABLE:

2 pickleball courts (set up upon request)  
Basketballs      Kickballs & bases  
Misc. equipment

## FEE:

Daily Admission: \$1.00 per person

*Children under the ages of 8 years must be accompanied by a responsible adult or older sibling. NO STREET SHOES (tennis shoes only). Enter door #6 in New Richland & Door #8 in Ellendale to sign in.*

Ages 13+



Schedules could vary each week dependent upon Ellendale & New Richland gym availability And participants' schedule. Please join our Facebook group

"NRHEG Pickup Basketball" to find the times, dates, and locations each week

Cost: \$3 at the door

Leader: John McGinnis

## Stay Active & Independent for Life

Do you wish you could improve your strength, balance and flexibility?

Do you want to decrease your risk of falling?

This free exercise program is for you.



**Stay Active & Independent for Life (SAIL) is an evidence-based exercise program proven to prevent falls and improve health and well-being.**

Designed for older adults, SAIL classes include strength, balance, flexibility and moderate aerobic training. Performing exercises that improve strength, balance and fitness are the most important activity that adults can do to stay active and independent. Exercises can be performed seated or standing.

### NEW RICHLAND

EVERY WEDNESDAY AND FRIDAY  
9:00 – 10:00 A.M.

TRINITY LUTHERAN CHURCH  
204 FIRST STREET NW

Walk-in Registration  
This is a FREE program



Join us for the walking program in the New Richland or Ellendale building!

You will need a Panther walking button which must be worn while walking. You will receive a walking button and building instructions upon registering in person at the Ellendale or New Richland school office. Please contact Macy at 507-417-2667 if you have additional questions!

**Time:** 6:45-7:30am and/or 3:30-7:30pm

**Dates:** Only available on school-days

**Cost:** \$5 per person each year to join regardless of when registering.

Contact Marlene with questions or to pre-register:

507.450.1518  
mlevine@ccsommn.org



# COMMUNITY EDUCATION REGISTRATION FORM

*1 registration form per person please*

Participant Name: \_\_\_\_\_

Address: \_\_\_\_\_ City: \_\_\_\_\_ Zip: \_\_\_\_\_

E-mail address: \_\_\_\_\_ Cell phone: \_\_\_\_\_ Work: \_\_\_\_\_  
*(email is NECESSARY for updates and notifications of class info.)*

1. Class/Activity: \_\_\_\_\_

Date: \_\_\_\_\_ Time: \_\_\_\_\_ Fee: \_\_\_\_\_

2. Class/Activity: \_\_\_\_\_

Date: \_\_\_\_\_ Time: \_\_\_\_\_ Fee: \_\_\_\_\_

3. Class/Activity: \_\_\_\_\_

Date: \_\_\_\_\_ Time: \_\_\_\_\_ Fee: \_\_\_\_\_

How will your child be getting home after class/activity is complete(who will pick up)? \_\_\_\_\_

Where will my child be picked up & dropped off at (bus trips only)? \_\_\_\_\_

TOTAL AMOUNT ENCLOSED: \_\_\_\_\_ CHECK #(s) \_\_\_\_\_ *Checks payable to: Community Ed*

**\*\*\* Field trips will require an additional form & waiver to fill out - located in a school office or on our website.**

## PARTICIPANT EMERGENCY CONTACT INFORMATION

STUDENT GRADE: \_\_\_\_\_ AGE: \_\_\_\_\_ ALLERGIES: \_\_\_\_\_

PERTINENT MEDICAL INFORMATION : \_\_\_\_\_

1. PARENT/GUARDIAN/RELATIVE/FRIEND NAME: \_\_\_\_\_

PHONE: \_\_\_\_\_ CELL: \_\_\_\_\_

2. PARENT/GUARDIAN/RELATIVE/FRIEND NAME: \_\_\_\_\_

PHONE: \_\_\_\_\_ CELL: \_\_\_\_\_

**RETURN FORM TO:**  
NRHEG Community Education  
306 Ash Ave. South  
New Richland, MN 56072

**MAKE CHECKS PAYABLE TO:**  
NRHEG Community Education. Please  
send separate checks for sports/trips &  
enrichment classes.

**You will be registered when** the payment  
is received. If the class is cancelled, all  
checks will be returned or shredded.



# COMMUNITY ED. REGISTRATION POLICIES

## REGISTRATION INFORMATION

- \*Prompt registration is encouraged as space is limited and classes may fill quickly. Additional class times may be added if needed.
- \*Classes without enough participants will be cancelled
- \*Classes are filled on a first-come, first-served basis. Waiting lists will be formed once classes are full.
- \*Confirmations of class registrations are NOT sent. Please assume you are registered unless otherwise notified.
- \*At this time phone and email registrations cannot be accepted. Please register via mail or in person. Include fee payment with registration form, as registrations will not be taken without payment

## REGISTRATION FEES

- \*Fees for ALL activities are due at time of registration. Please register by the deadline. Make checks payable to NRHEG Community Education. Please use a separate check for each activity & put the name of the class in the memo line.

## TRANSPORTATION

- \*Parents are responsible for their student's transportation unless noted otherwise. When picking up your student from class, please be prompt, as additional supervision is not provided.



NRHEG Public School District #2168  
Community Education  
Macy Whiteside, Director  
<https://www.nrheg.k12.mn.us/domain/49>  
507-417-2667  
[mwhiteside@nrheg.k12.mn.us](mailto:mwhiteside@nrheg.k12.mn.us)

## CANCELLATIONS

- \*In the event of school cancellation (late start, early out, or all day) classes/activities scheduled during this time will be cancelled. All programs that are cancelled or partially cancelled due to the weather will be attempted to be made up at the convenience of the instructor and facility schedules. No refunds will be given on classes that are cancelled or partially cancelled due to the weather.

## SCHOLARSHIP INFORMATION

- \*Families who qualify for the free/reduced price meal program may receive a reduction in class fees. Families may call NRHEG Community Ed to determine if they meet the criteria.

South Country Health Alliance (SCHA) members may take up to \$15 discount per class on most classes, limit of 5 discounted classes per year. If a class is less than \$15, the member may take the class free of charge. Members must be on SCHA at the time of registration, and through the duration of the class(es). Members must register in person in the Community Ed office and show SCHA card at the time of registration.



## REFUNDS

- \*If a class is cancelled due to low enrollment, fees are refunded or credited to your account. No refunds will be given 72 hours prior to class start date. Refunds will not be made after the first class meeting. Bus trips are non-refundable after the registration deadline and some classes may be non-refundable due to registration requirements.
- \*In the event that a class is filled or cancelled, you will receive a cancellation notice by mail, email, or telephone – your registration fee will be refunded.

## PHOTOGRAPHY DATA

- \*Candid photos of participants in class or an activity may be used in NRHEG media and publications. You may decline authorization by contacting the Community Education Office at 417-2667

Does your child qualify for FREE and Reduced lunches? If so, they qualify for **DISCOUNTS** on our classes! Stop into the Community Ed Office (C113 Secondary Building) or email [mwhiteside@nrheg.k12.mn.us](mailto:mwhiteside@nrheg.k12.mn.us) today and fill out some paperwork for up to \$50 off classes!



NRHEG School District 2168  
306 Ash Ave. South  
New Richland, MN 56072

Non-Profit Organization  
U.S. Postage Paid  
Permit No. 1  
New Richland, MN 56072

Postal Customer



# NRHEG COMMUNITY EDUCATION

Winter 2024 District Brochure



## School 2023-2024 Office Hours:

*District Office: School year: Monday-Friday 7:30-4:00pm.*

*Elementary School Office: School year: Monday-Friday 7:30-4:00pm*

*Community Education: School year: Monday-Friday 7:30-3:30pm (new location C113).*

*\*contact District Office if CE Office is unavailable/closed*